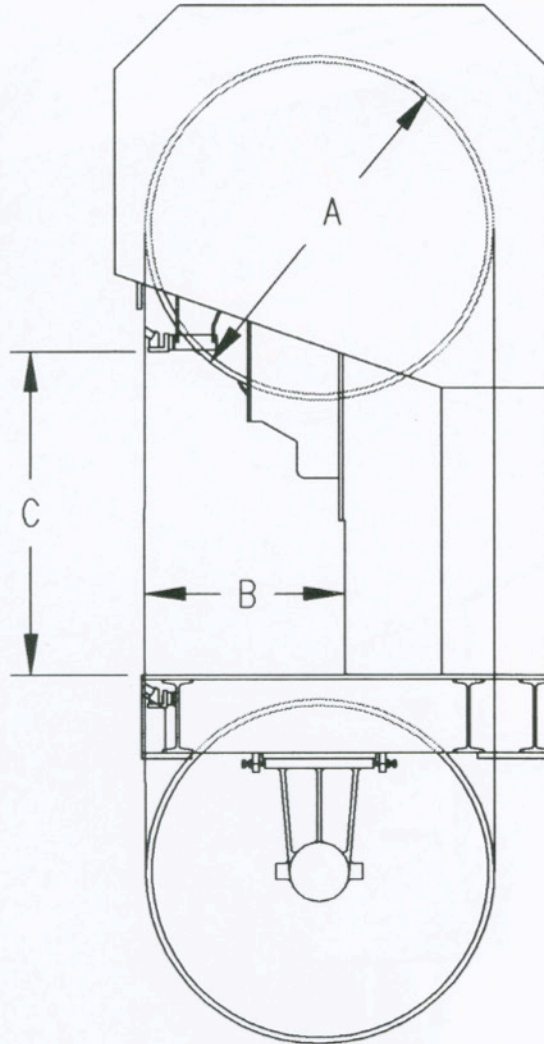






# HMC / PINHEIRO BAND SAW



	TECHNICAL DATA	SFA7-1400	SFA7-1600
DESIGNATION		55"	63"
Saw Wheel Diameter	<b>A</b>	55"	63"
Distance between the Blade & Column	<b>B</b>	29.5"	36"
Max. Cutting Height	<b>C</b>	52.75"	59"
Max. Width of the Sawblade		8"	11"
Max. Length of the Sawblade (approx.)		31'	36'
Min. Length of the Sawblade (approx.)		30'	35'
Hydraulic Motor		4HP	4HP
Main Motor		100HP	125HP
Optional Main Motor		125HP	150HP
Available in Double-Cut Configuration			<b>X</b>
Tension		2 X Hydraulic Cylinders	
Guide Movement		1 X Hydraulic Cylinders	

## HMC Corporation

284 Maple Street • Contocook, NH 03229

Phone: 603-746-4691 • Fax: 603-746-4819

Email [hmccorp@worldnet.att.net](mailto:hmccorp@worldnet.att.net) • Web [www.hmccorp.com](http://www.hmccorp.com)

All photos in this brochure are of actual HMC/Pinheiro equipment. Similar equipment ordered may not incorporate all of the identical features pictured. Specifications may be changed without notice. ©2001 HMC Corporation. All rights reserved.