

DEBARKERS



***Quality Engineering,
Rugged Construction,
Dependable Sawmill Equipment.***



HMC Debarkers Often Copied, Never Equaled!

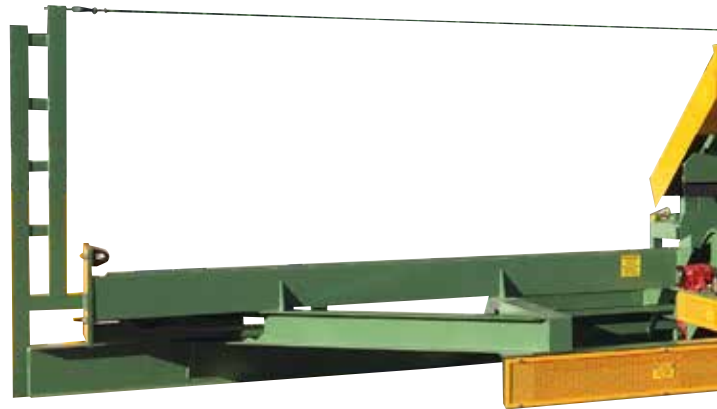
HMC has long been known as a pioneer in the development of Rosserhead Debarkers. Four models are available to suit most production requirements with log diameter ranges of 6"- 36", 7"- 42", 8"- 48", and 10"- 54".

All HMC Debarkers feature slant track design to eliminate log hangup as the logs are kicked out following debarking. Operator controls incorporate variable speed hydraulics on the log rotation and debarking carriage for smooth and responsive control.

The heavy-duty pivot assembly is standard equipment on all HMC Debarkers. This feature eliminates pivot shaft stress during the debarking operation. The pivoting of the head up and down is done on a pivot tube with the drive shaft passing through the inside diameter of the tube to drive the head belts. This design eliminates pivot shaft problems associated with sideload stress from the debarking process.



A variety of head options are available to meet debarking requirements. Standard 12" wide heads may be upgraded to 16" wide hummerheads for high production requirements. Cutting bits are available for different log species and seasonal changes, and include winter and summer carbide, weld-up, along with alloy and basswood/hickory cutters for long stringy species.



HMC Debarkers feature slant track design, heavy-duty pivot assembly features that makes them rugged, reliable and cost effective.

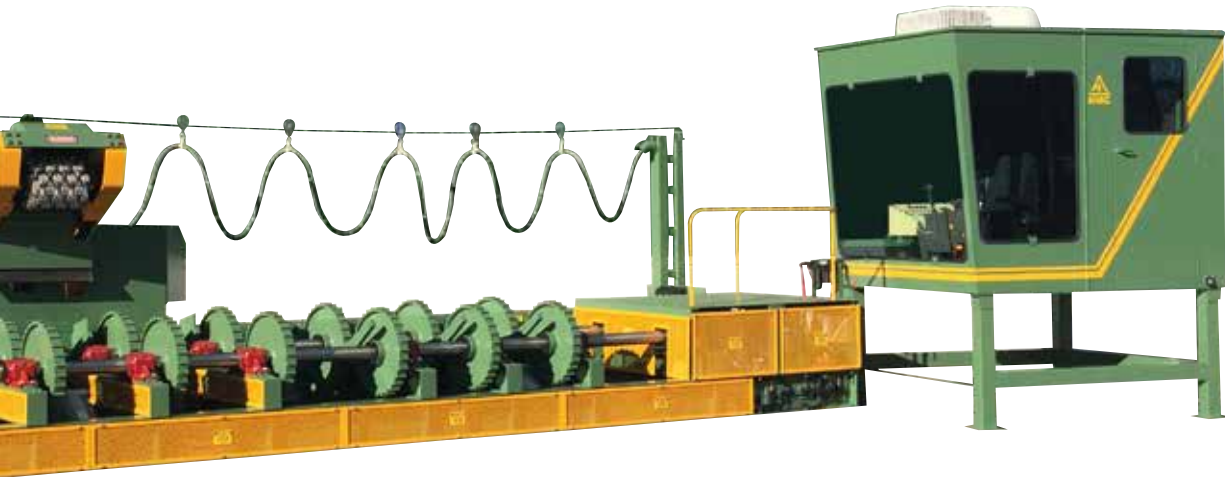
HMC offers an optional deluxe cab complete with insulation, heat, air conditioning, and automotive safety glass. All operating controls have been conveniently arranged to increase productivity and lessen operator fatigue. The cab is typically offset from the Debarker frame to give a better view of the debarking process as well as infeed and outfeed decks or log troughs.

Double Headed Debarker Option

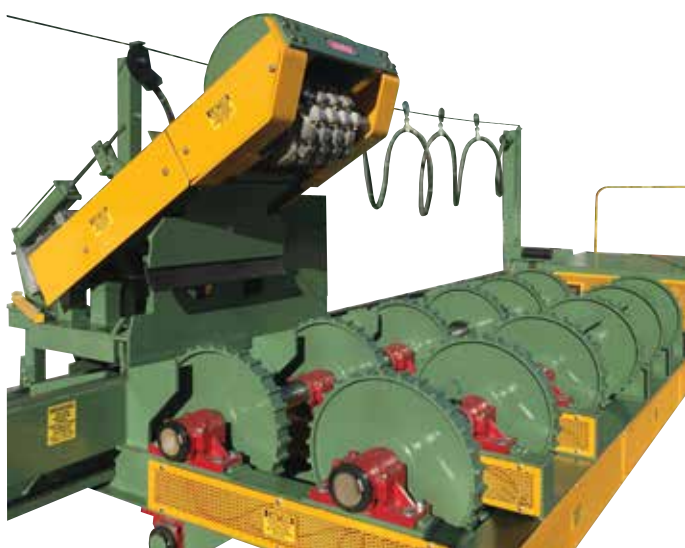
The HMC Double Headed Debarker is designed to eliminate knots and butt swells while conserving fiber. The Double Headed Debarker has an additional buggy deck that is attached to the standard buggy deck. The grinding head is equipped with aggressive carbide cutters and a locking cylinder on the head tube and a solenoid valve.



A second Debarker head is ideal for grinding knots and butt flares, while the primary head is used for routine debarking.



assembly, and a host of design



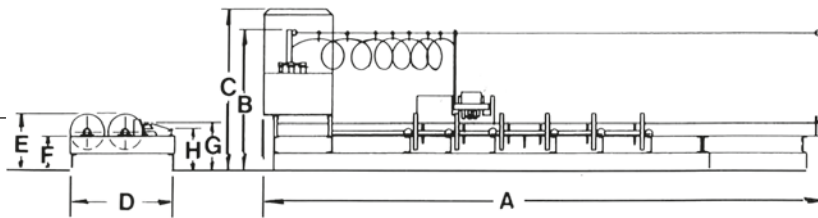
Options

- Left and right-hand construction
- Two 8" diameter kicker cylinders
- 40, 50, 60, or 75 HP barking head motor with 15" diameter x 16" wide head
- Hummerhead: 15" diameter x 12" wide or 15" diameter x 16" wide head
- Standard or 5' x 6' deluxe cab
- Up pressure on debarking head
- Double head design on V-2110 and V-2120
- WC-3 bark conveyor
- Auto lubrication system for the log rotation and kicker bearings
- Pantograph arms to carry the air hoses and electrical cables to the buggy deck
- Cable or chain buggy deck traverse
- All electric controls



HMC Debarker

SPECIFICATIONS	HMC V206	HMC V216	HMC V2110	HMC V2120
Log Diameter Range	6" - 36"	7" - 42"	8" - 48" 10" - 54" optional	10" - 54"
Maximum Log Length	20', will pass 24'	20', will pass 24'	20', will pass 24'	20', will pass 24'
Debarking Head	6 section 12" diameter with 24 teeth	6 section 12" diameter with 24 teeth	6 section 15" diameter with 24 teeth	6 section 15" diameter with 24 teeth
Debarking Head Assembly	30 HP electric TEFC motor	40 HP electric TEFC motor	50 HP electric TEFC motor	60 HP electric TEFC motor
V-Belt Drive	3C section 5.2 PD Sheaves	3C section 5.2 PD Sheaves	4C section 7.0 PD Sheaves	4C section 7.0 PD Sheaves
Frame Construction Base Cross Members	12" Channel 12" Channel	12" Channel 12" WFB	12" WFB 8" WFB	12" WFB 8" WFB
Controls	Stand-up	Sit-down	Sit-down	Sit-down
Log Rotation Wheels	6 sets - 25" diameter	6 sets - 25" diameter	6 sets - 25" diameter	6 sets - 25" diameter
Log Rotation Shafts	2-15/16" diameter with babbit bearings	3-7/16" diameter with babbit bearings	3-15/16" diameter with Urethane bearings	4-7/16" diameter with Urethane bearings
Log Kickers Arms	6 - 1" thick arms on 2-7/16" shafts	6 - 1" thick arms on 2-15/16" shafts	6 - 1-1/2" thick arms on 3-7/16" shafts	6 - 1-1/2" thick arms on 3-7/16" shafts
Log Kicker Cylinder	8" diameter with solenoid control	8" diameter with solenoid control	2- 6" diameter with solenoid control	2 - 8" diameter with solenoid control
Hydraulic Traverse and Log Rotation	10 HP TEFC	15 HP TEFC	25 HP TEFC	30 HP TEFC
Machine Size	32'10" L, 7'4" W, 8' H	32'10" L, 7'4" W, 8' H	36" L, 8'10" W, 7'8" H	36" L, 8'10" W, 7'8" H
Air Requirements	20 CFM @ 100 PSI	20 CFM @ 100 PSI	50 CFM @ 100 PSI	50 CFM @ 100 PSI
Heavy-Duty Pivot Assembly	Standard	Standard	Standard	Standard
	A 32' - 10" B 8' - 0" C 9' - 3-1/4" D 6' - 0" E 39" F 24" G 33-1/4" H 28-3/4"	A 32' - 10" B 8' - 0" C 9' - 3-1/4" D 6' - 0" E 40-1/4" F 24-1/4" G 32-3/4" H 28-3/4"	A 36' B 7' - 8" C 9' - 7-1/8" D 7' - 2" E 37-1/4" F 20-1/2" G 31-1/4" H 25-1/4"	A 36' B 7' - 8" C 9' - 7-1/8" D 7' - 2" E 37-1/4" F 20-1/2" G 31-1/4" H 25-1/4"



HMC Corporation

284 Maple Street
 Contoocook, NH 03229
 Phone 603-746-4691
 Fax 603-746-4819
 Email info@hmccorp.com
 Web www.hmccorp.com

Distributed by:

All photos in this brochure are of actual HMC equipment.
 Similar equipment ordered may not incorporate all the identical features pictured. Specifications may be changed without notice.
 © 2017 HMC Corporation. All rights reserved.